



Privacy Vinyl Fence Installation

Contents

| | |
|--|---|
| Item list..... | 2 |
| Step 1: Setting Steel Posts | 3 |
| Step 2: Setting Collars..... | 4 |
| Step 4: Vinyl Posts & Bottom Rails | 5 |
| Step 5: Setting Fence Height..... | 5 |
| Step 5: Fence Boards | 6 |
| Step 6:..... | 6 |
| Gate Installation | 7 |

Before You Start

- Read this instruction manual **CAREFULLY**.
- It is **IMPERATIVE** to have the utilities checked and marked to avoid damaging underground utilities, failure to do so could result in **FINES, INJURY or DEATH**
- Be sure that your project falls within all local guidelines (bylaw, condo board, landlord...)
- Check property lines before laying out your fence.
- It is **CRITICAL** that all linear measurements are as accurate as possible
- We recommend the installer wear the following CSE approved personal protective equipment:
 - Safety glasses
 - Steel toed boots
 - Construction gloves
 - Ear plugs

Tools Required

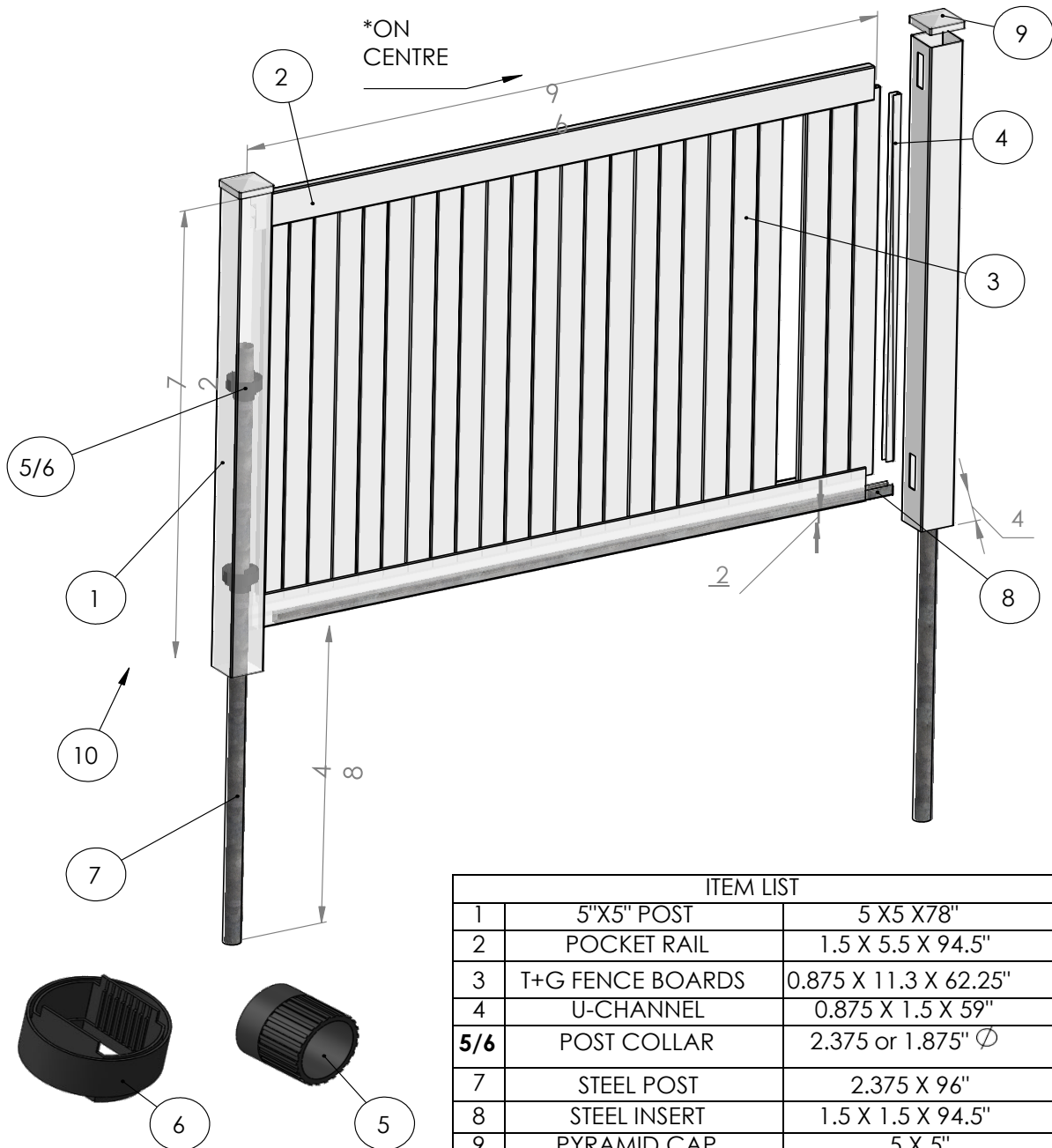
- Power Drill (3/8" hex bit)
- String line
- 4-foot bubble level
- Circular saw (with metal blade)
- Measuring Tape
- Spade Shovel
- Stud finder*
- Sledge Hammer*

Building Tips

- To avoid scratching the PVC during assembly, work on soft, non-abrasive surfaces when possible.
- When cutting PVC components with a power saw, use a fine-toothed finishing blade.

Privacy Vinyl Fence Installation

Item list



| ITEM LIST | | |
|-----------|------------------|-----------------------|
| 1 | 5"X5" POST | 5 X 5 X 78" |
| 2 | POCKET RAIL | 1.5 X 5.5 X 94.5" |
| 3 | T+G FENCE BOARDS | 0.875 X 11.3 X 62.25" |
| 4 | U-CHANNEL | 0.875 X 1.5 X 59" |
| 5/6 | POST COLLAR | 2.375 or 1.875" Ø |
| 7 | STEEL POST | 2.375 X 96" |
| 8 | STEEL INSERT | 1.5 X 1.5 X 94.5" |
| 9 | PYRAMID CAP | 5 X 5" |
| 10 | GROUND LEVEL | ----- |

Privacy Vinyl Fence Installation

Step 1: Setting Steel Posts

- Have all underground utilities & property lines located before laying out your fence line.
- Keep in mind, the post that will bear the weight of the gate will need to be set in concrete.
- Set stakes in the ground and run a string line as a guide for your fence line.
(Set them within your property line to avoid encroaching onto adjacent property).
- Steel posts should be spaced at 96" on center. For 6' sections, the posts should be 72" on center.
- Slip **TWO SETS** of collar assemblies (see *Figure 2* for proper orientation) over each steel post prior to pounding into the ground. The post may "mushroom" on the pounded end and make it impossible to sleeve collars overtop afterwards.
- **The steel posts must be pounded 3'–4' into the ground** (*Figure 1*). Anything less can create an unstable finished product.
- Use a level and your string line to ensure that the steel posts are as plumb as possible while pounding. The post collars allow up to 2" of adjustment.
- Start pounding your first pipe on a corner of your lay out.
- You may need to dig and concrete posts, if for some reason the posts cannot be pounded in.
- Pound all your steel posts.
- 96" is the maximum spacing allowed in order to accommodate precut materials.

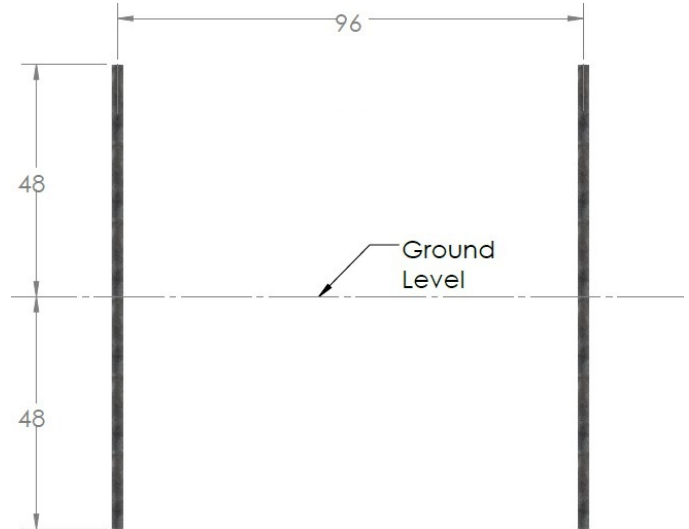


Figure 1

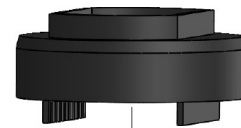
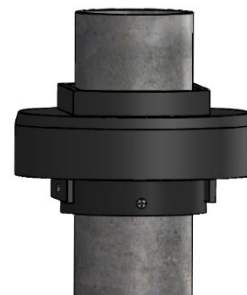


Figure 2



Figure 3



Privacy Vinyl Fence Installation

Step 2: Setting Collars

- Each post gets two Collars, which consist of an inner-ring and an outer-ring (*Figure 2&4*).
- Begin By setting the collars on the ends, corners, or any significant point of change.
- The bottom collar can be set above the bottom rail, usually 12-16" off the ground. This will affect how you set your fence for height in "Step 3".
- Space the collars consistently at ~30" apart.
- Fasten the smaller rings in position with self-tapping screws.
- The orientation of the bottom collars should have the adjustment opening parallel to the fence line and the top collars with the adjustment opening perpendicular to the fence line.
- Then, use a level to set of all the ends and corner posts. Make sure they are plumb in all directions.
- Once the corner and end post collars are set, run a string line along the top collars for each run of fence. (*Figure 5*)
- Adjust the remaining top collars to the string line and fasten them to the steel posts with self tapping screws. (*Figure 2&3*)
- Finally, level the remaining bottom collars using the top collars as a reference and fasten them to the steel posts.

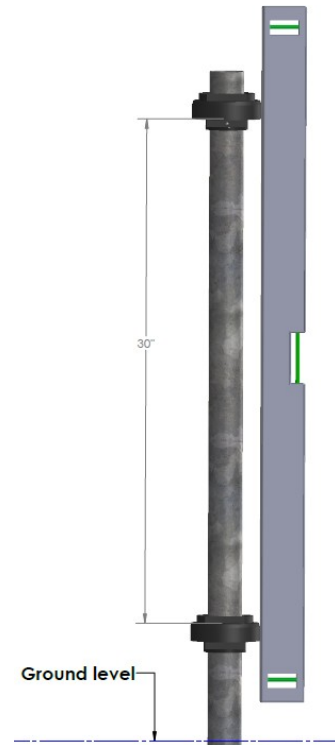


Figure 4

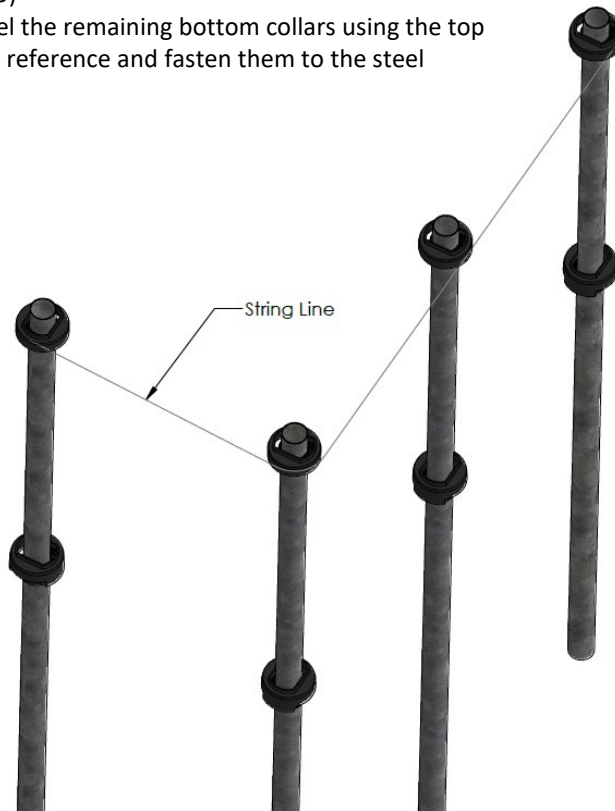


Figure 5

Privacy Vinyl Fence Installation

Step 4: Vinyl Posts & Bottom Rails

- Slip all the 5x5 vinyl posts over the steel posts & collars. Ensure each 5x5 is installed in the correct location (Example: line, corner, end).
- Insert all galvanized reinforcements into the 8' pocket rails. (**NOTE: Make sure the Pocket rails are $\frac{1}{4}$ " shorter than the steel to steel measurement**).
- Install the bottom rails. To do this, insert one end of the pocket rail into the vinyl 5x5 with the channel/pocket facing up, and rotate the opposing vinyl 5x5 to allow the rail to fit as snug as possible. (*Figure 7*) Start from one end of the fence line and work in one direction.
- Fasten a U-Channel to each vinyl 5x5 betweenholes with one screw at the top. It should be hanging and be able to freely "swing".

Figure 6

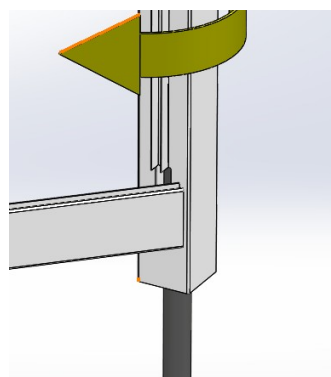
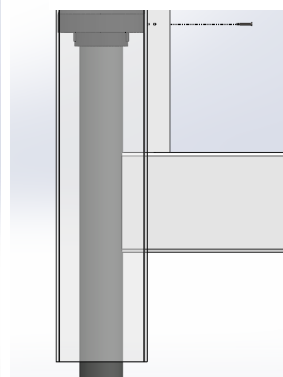


Figure 7



Building tip

Some stud finders can locate the collars behind the vinyl 5x5 posts.

Step 5: Setting Fence Height

- **The Ideal distance** between the bottom pocket rail and level ground is **2"**. DLR vinyl 5x5 posts allow up to 6" of distance to compensate for uneven or sloped terrain.
- To set the height of your fence by fastening a screw into the lower collar through the vinyl post and U-Channel. (*Figure 6*)
- Run a string over the top of the 5x5 vinyl posts from end to end of each fence line. Make sure the string line is taut.
- Set the rest of the posts to the proper height by lifting up to string level and fastening to collars or pounding the 5x5 vinyl post into the ground. (use a sledgehammer and a block of wood, or use a shovel to dig around the bottom of the post).

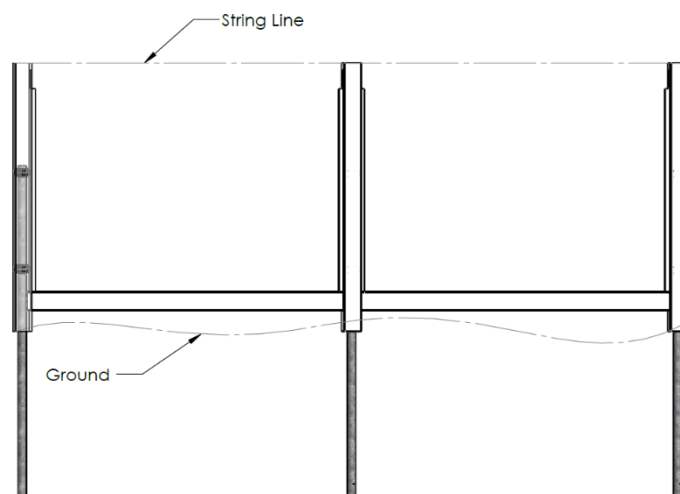


Figure 8

Privacy Vinyl Fence Installation

Step 6: Fence Boards

- Insert interlocking fence boards into bottomrails. (Figure 11)
- The last plank may need to be cut to the appropriate width or a shim hidden behind U-Channel, so the boards are snug.
- In sloped sections corners of boards at the top and bottom may need to be cut to accommodate the slope (Figure 12)
- Insert top rails, if there are no notches on rails put a set screw inside post into top rail (Figure 10). (leave $\frac{1}{4}$ " between the wall of the vinyl 5x5 and the screw head for thermal expansion or contraction)
- Glue on caps by applying a dab to the inside of each corner.

Note:

If fence is picket or lattice accent it is easiest to put the accent together on ground first and insert after.

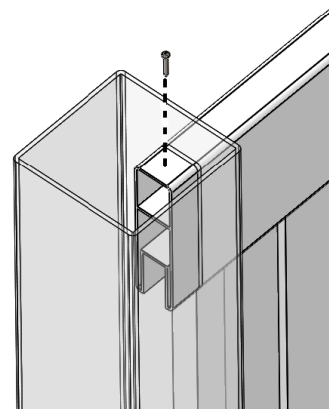


Figure 10

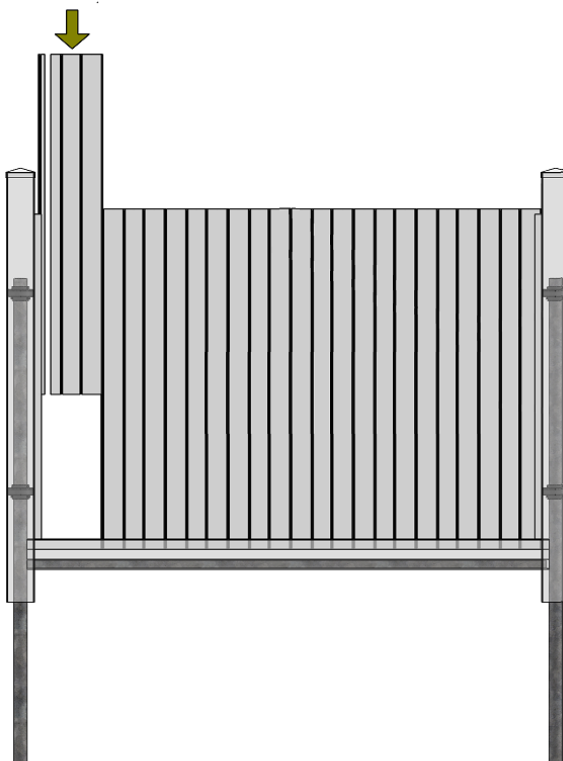


Figure 11

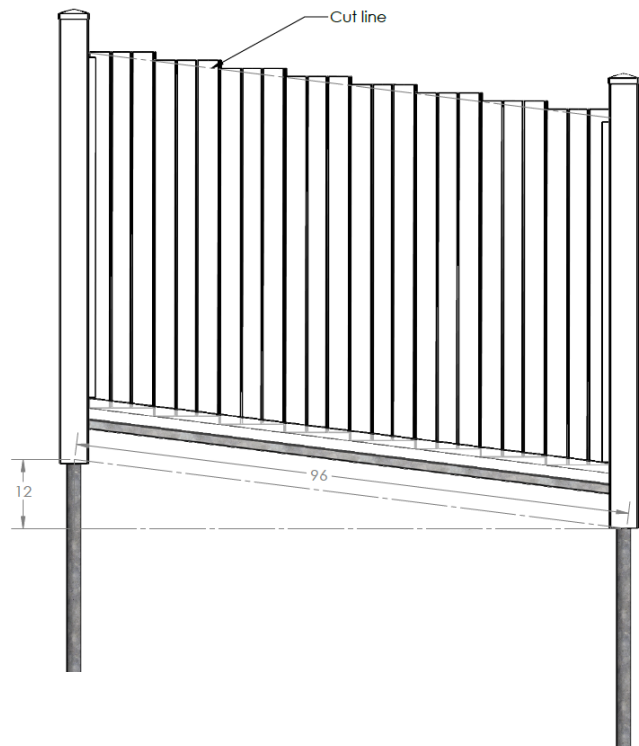
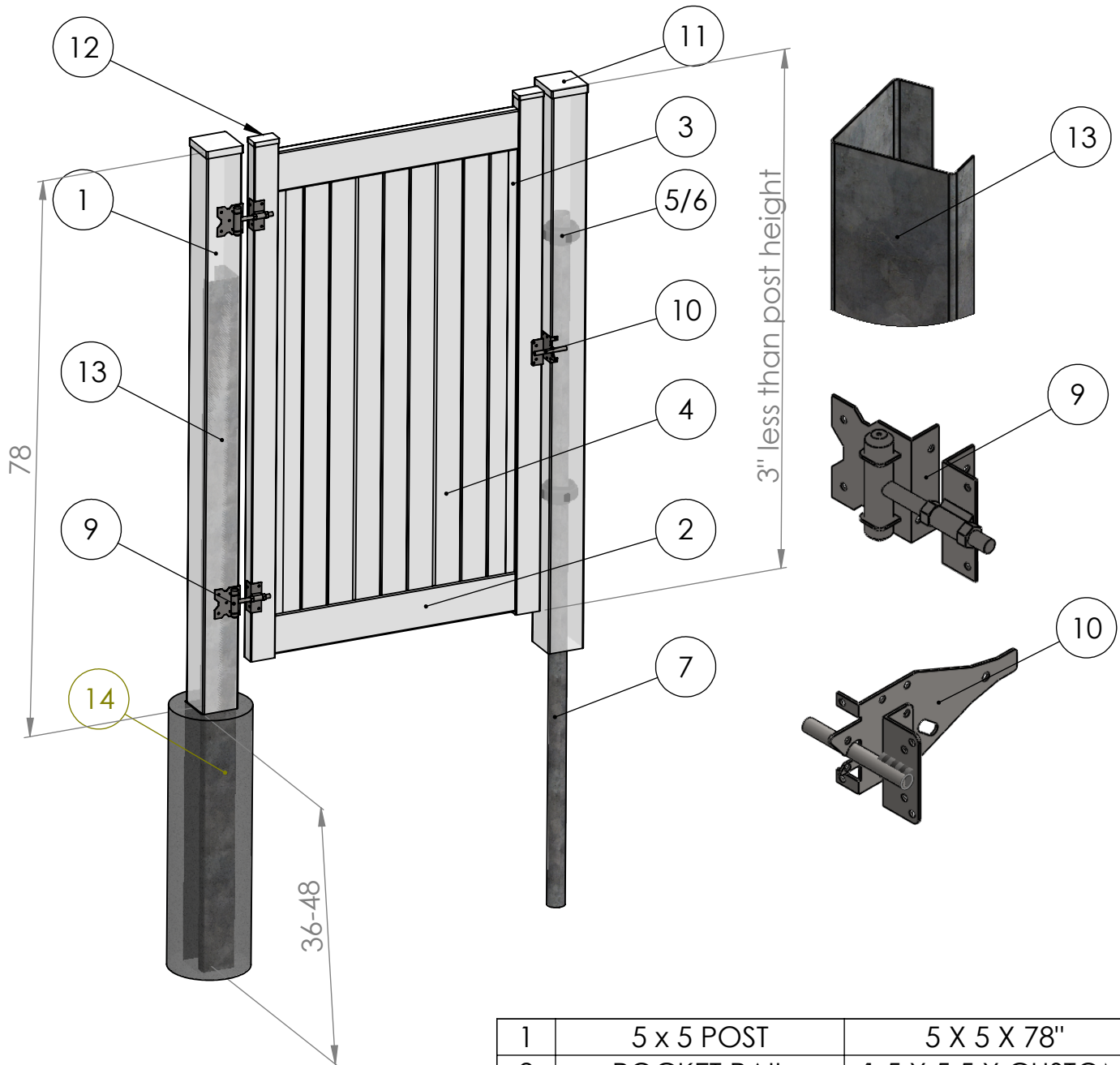


Figure 12

Step 7:

- Sit on your lawn Chair and enjoy your Maintenance Free Vinyl Fence!

6' FULL PRIVACY GATE



DLR
Vinyl Products
www.dlrvinylproducts.ca

Calgary
403.265.5260

Edmonton
780.431.1771

| | | |
|-----|------------------|---------------------------------|
| 1 | 5 x 5 POST | 5 X 5 X 78" |
| 2 | POCKET RAIL | 1.5 X 5.5 X CUSTOM |
| 3 | U-CHANNEL | 0.875 X 1.5 X 59" |
| 4 | T+G FENCE BOARDS | 0.875 X 11.3 or 6" X 61.75" +/- |
| 5/6 | POST COLLAR | 2.375 or 1.875 ϕ |
| 7 | STEEL POST | 2.375 X 1.875 X 96" |
| 8 | GATE SIDE | 3.5 X 2 X 72" +/- |
| 9 | GATE HINGE | ----- |
| 10 | GATE LATCH | ----- |
| 11 | PYRAMIDCAP | 5 X 5 |
| 12 | GATE P.CAP | 3.5 X 2 |
| 13 | GATE METAL | 4.75 X 4.75 X 96 |
| 14 | CONCRETE PILE | ----- |